

# HARLOW AND MONROE FURNITURE COLLECTION

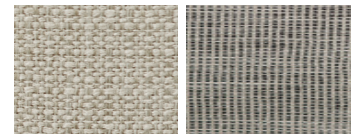


monroe dining chair

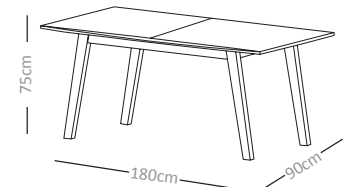


river pebble

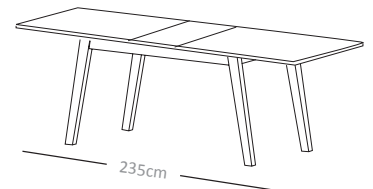
twill



harlow dining table



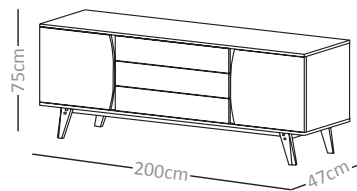
extension leaf stored within the table



at full extension



harlow sideboard



CODE	PRODUCT DESCRIPTION	DIMENSIONS	MATERIAL	RRP
TAB212	Harlow extendable dining table	W180-235xD90xH75cm	Solid oak exterior with carved edging and solid oak legs. Dining table has an oak veneer top	\$1,995
TAB213	Harlow sideboard	W200xD47xH75cm		\$1,950
CHA110r	Monroe dining chair river pebble	W46xD56xH92cm	<b>Frame</b> - solid timber construction and solid oak legs <b>Seat</b> - high density foam and webbing for comfort	\$395
CHA110t	Monroe dining chair twill	W46xD56xH92cm	<b>Fabric</b> - <b>River Pebble:</b> 100% polyester   100,000 Martindale rubs <b>Twill:</b> 35% viscose / 65% polyester   35,000 Martindale rubs	

**PRODUCT CARE :** For the timber we recommend using a ph-neutral soap and water mix to clean periodically. Always ensure furniture is dried completely and that no soap residue remains on the surface. Do not use cleaners or cleaning agents that are abrasive, caustic or acidic such as bleach or ammonia as these may affect the colour of the timber.

Monroe chair covers are removable. DRY CLEAN ONLY Treat spills and stains immediately with a damp cloth. Scotchgard recommended.

**PREVENTATIVE & REGULAR TREATMENT :** Use a natural multipurpose furniture wax to help to maintain the surface. Always refer to manufactures instructions before use. This advice does not constitute a guarantee. Always check with Papaya before beginning a repair process. Keep out of direct sunlight. For indoor use only.